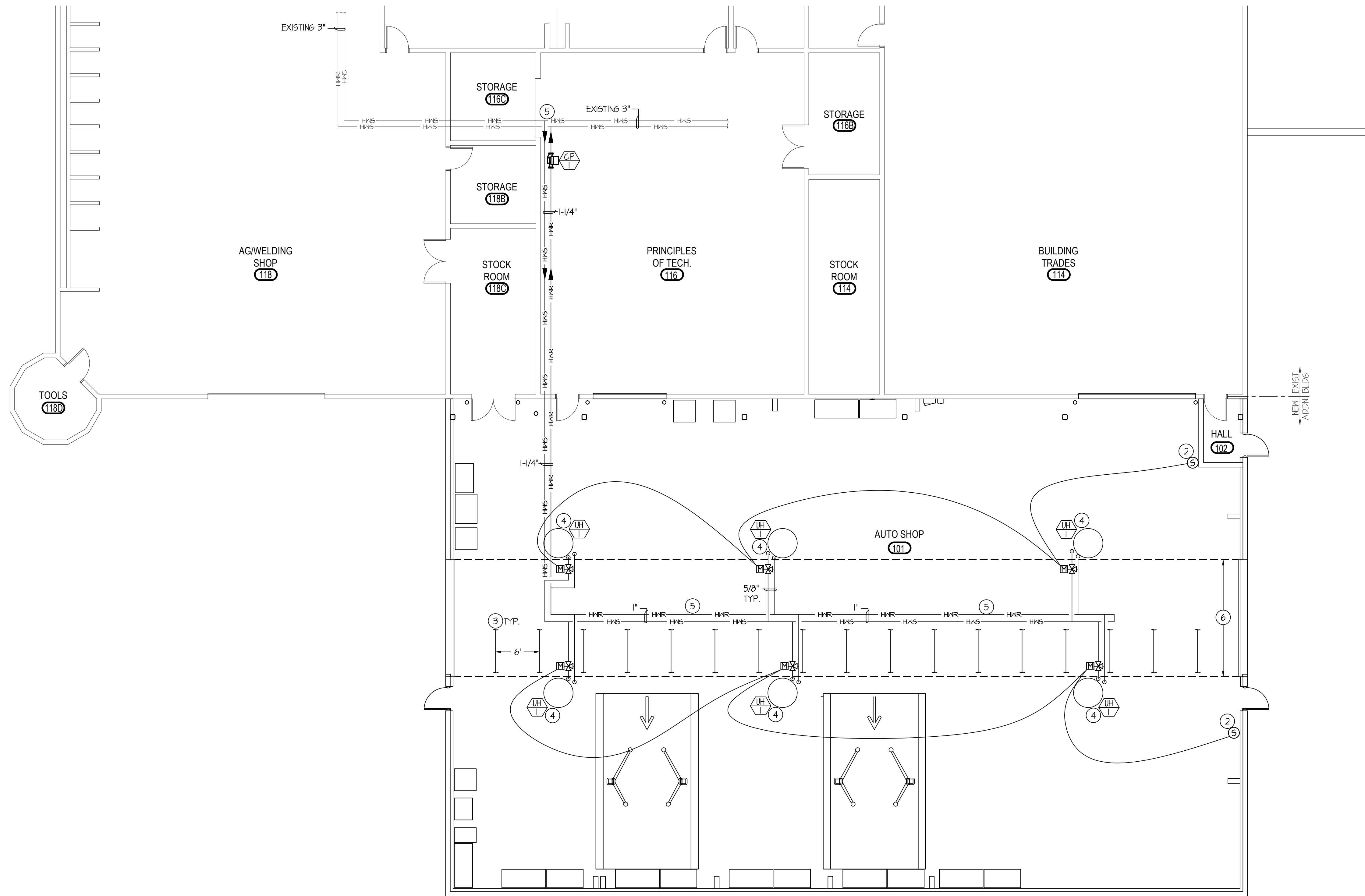


3/7/2019 3:49:19 PM F:\16\16082 SVHS Shop\_Addn MAIN.dwg



**MAIN LEVEL PIPING PLAN**

SCALE: 1/8" = 1'-0"



**PLAN NOTES:**

- 1 DROP ROUND FLEXIBLE TUBE DOWN TO FLOOR FOR CAR EXHAUST SYSTEM. SUPPORT FLEXIBLE TUBES WITH SLING SYSTEM AND WALL MOUNTED TAKE-UP WINCH. SEE DETAIL ON SHEET M2.0. LENGTH OF DUCTS SHALL BE AS REQUIRED TO REACH THE FLOOR.
- 2 NEW ZONE TEMPERATURE CONTROL SENSOR WITH UNITARY CONTROLLERS. SEE SPECIFICATIONS.
- 3 SUPPORT TRUSSES. SEE M2.0 FOR SECTION VIEW.
- 4 MOUNT BOTTOM OF UNIT HEATER AT 16" FROM FINISHED FLOOR. COORDINATE WITH LIGHTING AND EQUIPMENT FOR FINAL LOCATION AND INSTALLATION. SEE CONNECTION DETAILS ON SHEET M2.0.
- 5 CONNECT NEW 1-1/4" HWS & HWR TO EXISTING 3" LINE RUN TO NEW ADDITION AREA AS SHOWN. COORDINATE WITH SCHOOL DISTRICT FOR DOWNTIME. FILL WITH 50% GLYCOL MIX.
- 6 KEEP PIPING ABOVE ROOF STRUCTURE CLEAR IN THIS AREA. NO DUCTWORK OR PIPING ALLOWED BELOW ROOF STRUCTURE IN THIS AREA.

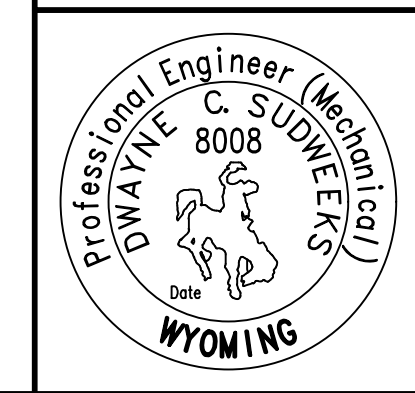
**MECHANICAL LEGEND**

SYMBOL	DESCRIPTION
Ⓢ	ELECTRONIC THERMOSTAT
Ⓢ	EQUIPMENT SYMBOL
HD	HAND DAMPER
Ⓢ	ROUND BRANCH DUCT WITH HAND DAMPER
Ⓢ	INSULATED FLEXIBLE DUCT
Ⓢ	RETURN AIR OR EXHAUST GRILLE
Ⓢ	CEILING DIFFUSER
Ⓢ	ROOF MOUNTED UPBLAST EXHAUST FAN

**GENERAL NOTES:**

- A- THE CONTRACTOR SHALL CHECK AND VERIFY ALL DIMENSIONS AND CONNECTIONS ON THE JOB SITE. ALL WORK SHALL BE EXECUTED FROM MEASUREMENTS TAKEN AT THE SITE.
- B- THE MECHANICAL CONTRACTOR SHALL BE RESPONSIBLE TO INSURE PROPER CODE CLEARANCES FOR ELECTRICAL AND MECHANICAL ACCESS WHEN INSTALLING ANY EQUIPMENT SUPPLIED BY THE MECHANICAL CONTRACTOR.
- C- IT IS CRITICAL THAT THIS CONTRACTOR COORDINATE EQUIPMENT LOCATIONS WITH PIPING, DUCTWORK, ELECTRICAL CONDUIT AND BUILDING STRUCTURE TO INSURE CODE COMPLIANCE.
- D- CEILING DIFFUSERS ARE SHOWN IN APPROXIMATE LOCATIONS. REFER TO LIGHTING PLANS AND REFLECTED CEILING PLAN FOR EXACT LOCATIONS.
- E- DUCT DIMENSIONS CALLED OUT ON DRAWINGS ARE INSIDE FREE AREA DIMENSIONS. ACOUSTICAL DUCT LINER ARE TO BE ADDED TO OVERALL MEASUREMENTS.
- F- ALL DUCTWORK AND PIPING WHICH PASSES THRU FIRE RATED WALLS TO BE FIRE STOPPED WITH APPROVED FOAM OR SEALANT. REFER TO SPECIFICATIONS FOR APPROVED MANUFACTURERS.

ORIGINAL DRAWING SIGNED BY: DWAYNE C. SUDWEEKS  
 DATE ORIGINAL SIGNED: Jan 25, 2019  
 ORIGINAL ON FILE AT ENGINEERED SYSTEMS ASSOCIATES  
 1355 EAST CENTER, POCATELLO, IDAHO 83201



**Engineered Systems Associates**  
 1355 EAST CENTER  
 POCATELLO, IDAHO 83201  
 PHONE: (208) 233-0501  
 FAX: (208) 233-0529  
 EMAIL: esa@engsystems.com  
 ESA JOB NUMBER: 16082

**nw architects p.a.**  
 ARCHITECTURE / PLANNING / INTERIORS  
 SCOTT L. NIELSON, A.I.A. KEVIN R. BODILY, A.I.A. JAMES H. WYATT, A.I.A.  
 900 JOHN WILKES PARKWAY, P.O. BOX 2012 - HONOLULU, HAWAII 96802-2012  
 (P) 208-522-8779 (F) 208-522-8765 (W) nwarchitects.com

TECHNICAL CAREER CENTER FOR:  
**STAR VALLEY HIGH SCHOOL**  
 LINCOLN COUNTY SCHOOL DISTRICT NO. 2  
 445 SWIFT CREEK LANE, AFTON, WYOMING 83110

PROJECT: \_\_\_\_\_

REVISIONS

NO.	DESCRIPTION

PROJECT NO. 16061  
 DATE: MARCH 2019  
 DRAWN BY: T. DAVIS  
 CHECKED BY: D. SUDWEEKS

DRAWING NO.: **M1.2**

MAIN LEVEL PIPING PLAN